



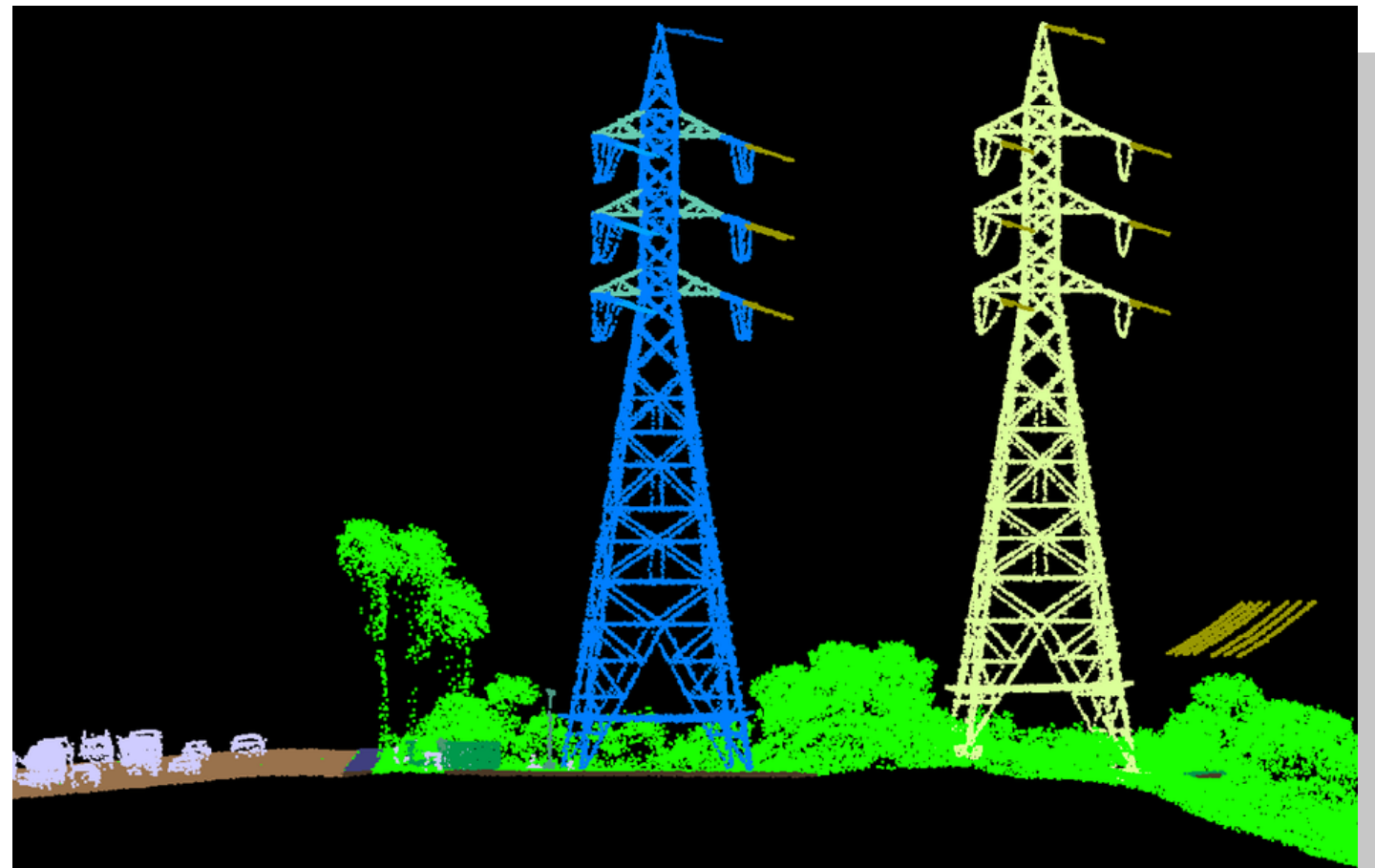
LIDAR AND REMOTE SENSING

Statement of Qualifications

INTRODUCTION

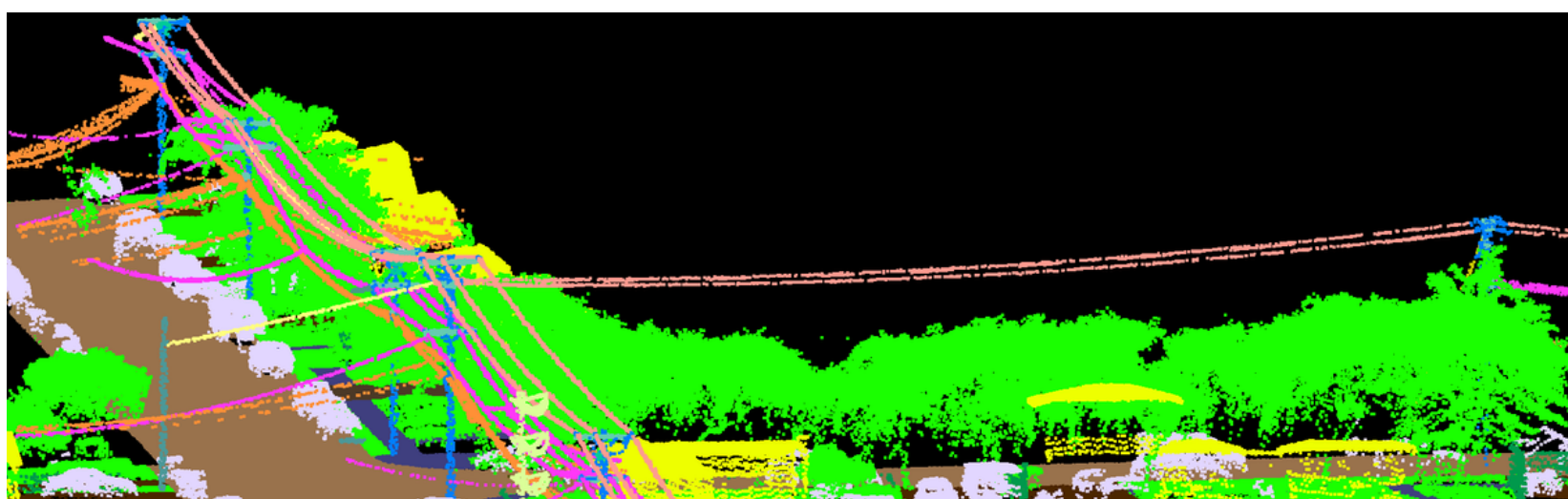
The LiDAR & Remote Sensing division at GIS Surveyors, Inc. (GSI) has extensive experience in providing geospatial services including classification, vectorization, and vegetation management. The LiDAR and Remote Sensing Division is well diversified across the geospatial industry with experience including, but not limited to, Utilities, Transportation, Autonomous Driving, Government, Defense and Intelligence. In addition, our team has expertise in PLS-CADD modeling, aerial photogrammetry, terrain modeling and analysis.

GSI's LiDAR & Remote Sensing division was recently awarded a contract by Southern California Edison to perform their internal LiDAR QA/QC for geospatial projects and serve as their LiDAR Subject Matter Experts (SMEs).



LIDAR AND REMOTE SENSING TEAM STRENGTHS

| | |
|--------------------------------|--|
| Highly Acclaimed | Valued by our clients for delivering incredibly accurate LiDAR data in a timely manner. |
| Skilled Personnel | GSI recruits and retains our top technical talent due to the excellent industry reputations of our company and their respective leadership. Our staff have a combined 150 years' experience from a variety of geospatial backgrounds crossing over multiple industries. |
| Industry Best Practices | GSI uses industry best practices to guarantee superior results and streamline operations. These practices evolve for the better as improvements are identified and applied. |
| Rigorous QA/QC | The team has developed an in-house QA/QC process for each project to ensure all deliveries meet and/or exceed client expectations. |
| Training and Staff | Our corporate culture values geospatial professionals and their personal and professional development. GSI ensures all staff are trained in new technologies and techniques with the end goal to improve customer service through enhanced efficiency and effectiveness. |



INDUSTRY EXPERIENCE

- Environmental
- Transportation
- Gas
- Electric
- Intelligence and Defense
- Autonomous Driving

Key Competencies

- Acquisition: Airborne, Mobile, Terrestrial
- PLS-CADD Modeling
- Feature Classification and Extraction
- Vegetation Analysis
- Ortho Rectification and Stereo Imagery
- Terrain Modeling
- Wetland Delineation and Shoreline Mapping
- Hydrologic Modeling
- Hyperspectral Imagery Analysis
- Change Detection
- Building Information Modeling
- Planimetric Mapping



SERVICE-DISABLED VETERAN OWNED BUSINESS

HQ: 12120 Tech Center Drive, Suite D, Poway, CA 92064 | 858.679.1732 | www.gissurveyors.com | info@gissurveyors.com