



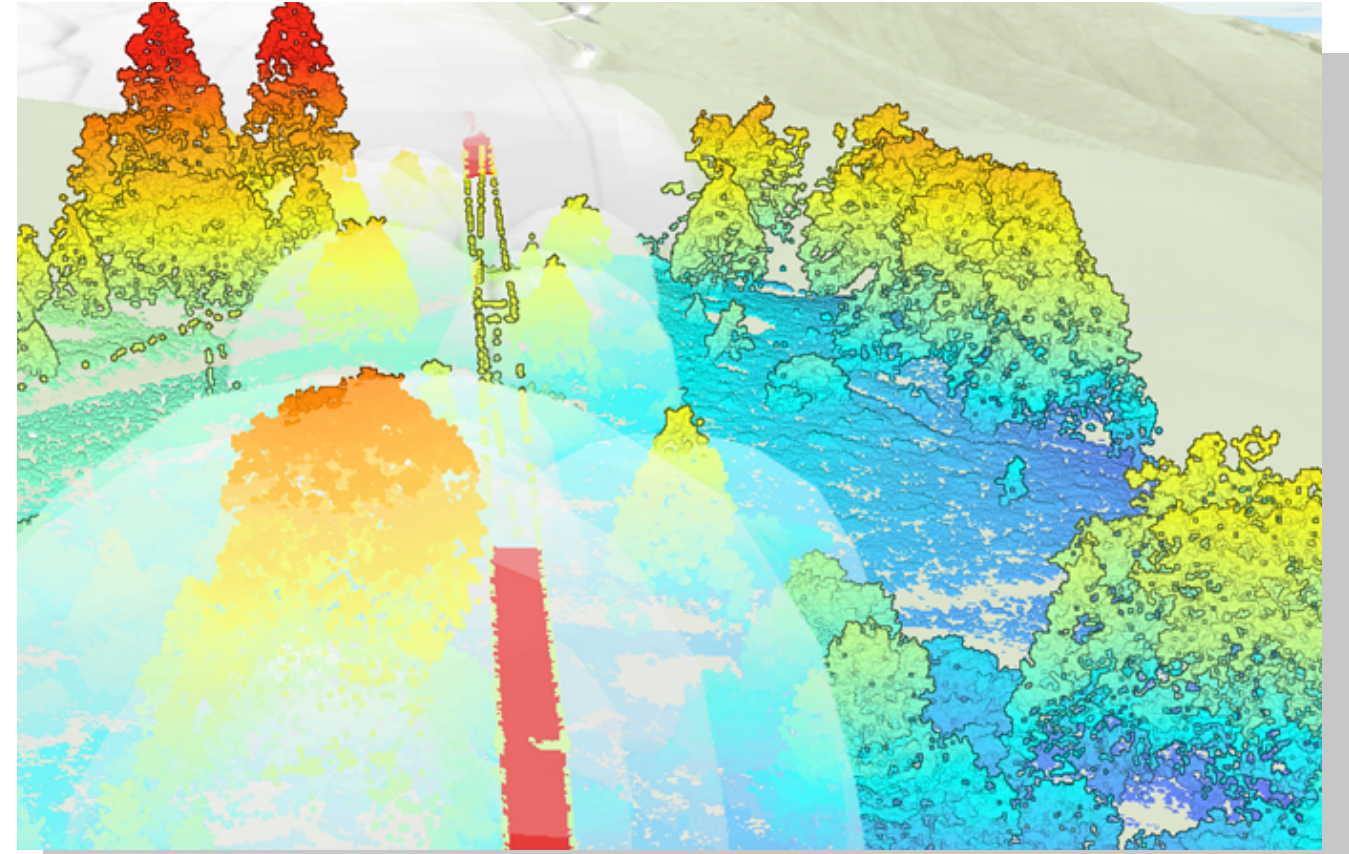
# GEOGRAPHIC INFORMATION SYSTEMS (GIS)

## Statement of Qualifications

### INTRODUCTION

GIS Surveyors, Inc. (GSI) has extensive experience in providing GIS services including GIS project management and geodatabase development consulting. In addition to direct consulting, our team members are experienced in process improvement, enterprise geospatial database management, web-based mapping solution development, spatial data editing and CAD standard implementation.

Our team consists of multi-talented professionals who bring wide and varied experience enhanced through industry and in-house workshops and cross-training. Our goal is to provide comprehensive solutions which follow process and technology best practices that can be relied upon for the duration of their lifecycle.



Automated 3D Electric Conductor Tree Strike Analysis Using LiDAR

We can build enterprise systems from the ground up or modify existing systems with the highest level of quality. Our staff focuses on building a strong data foundation through creating or improving system integrations, providing automation, development of field data collection workflows, and streamlining processes from digitization to conversion workflows including PLS-CADD, Auto-CAD and others. The data produced through these processes can be trusted for 2D/3D data modeling, all levels of spatial analysis, reporting, and for use in robust web-based GIS applications.

GSI is a one stop shop for GIS solutions; taking complex problems and providing unique and simplified solutions for our clients. Quality, integrity, and accountability are our top priorities.

### GIS TEAM STRENGTHS

<b>Proven Track Record</b>	History of completing projects within cost, quality, and time requirements.
<b>Best Software and Tools</b>	Leverages the latest technologies to ensure high quality and professional deliverables.
<b>Proven Staff</b>	Recruits and retains top technical talent due to the excellent industry reputations of our company and their respective leadership.
<b>Industry Best Practices</b>	Use of industry best practices to guarantee superior results and streamline operations, our practices evolve for the better as improvements are identified and applied.
<b>Rigorous QA/QC</b>	Ensures all deliverables surpass client expectations.
<b>Training</b>	All staff are trained in new technologies and techniques with the end goal to improve customer service through enhanced efficiency and effectiveness.

**Key Competencies**

- Digitizing
- PLS-CADD/LiDAR Conversion
- Spatial Analysis
- Data Migration
- 2D/3D GIS Modeling
- Needs Assessment
- Geodatabase Design/Creation
- Program Development
- Data Conversion
- Web Based GIS Mapping
- FME/ETL Process Workflows
- Programming



**SERVICE-DISABLED VETERAN OWNED BUSINESS**